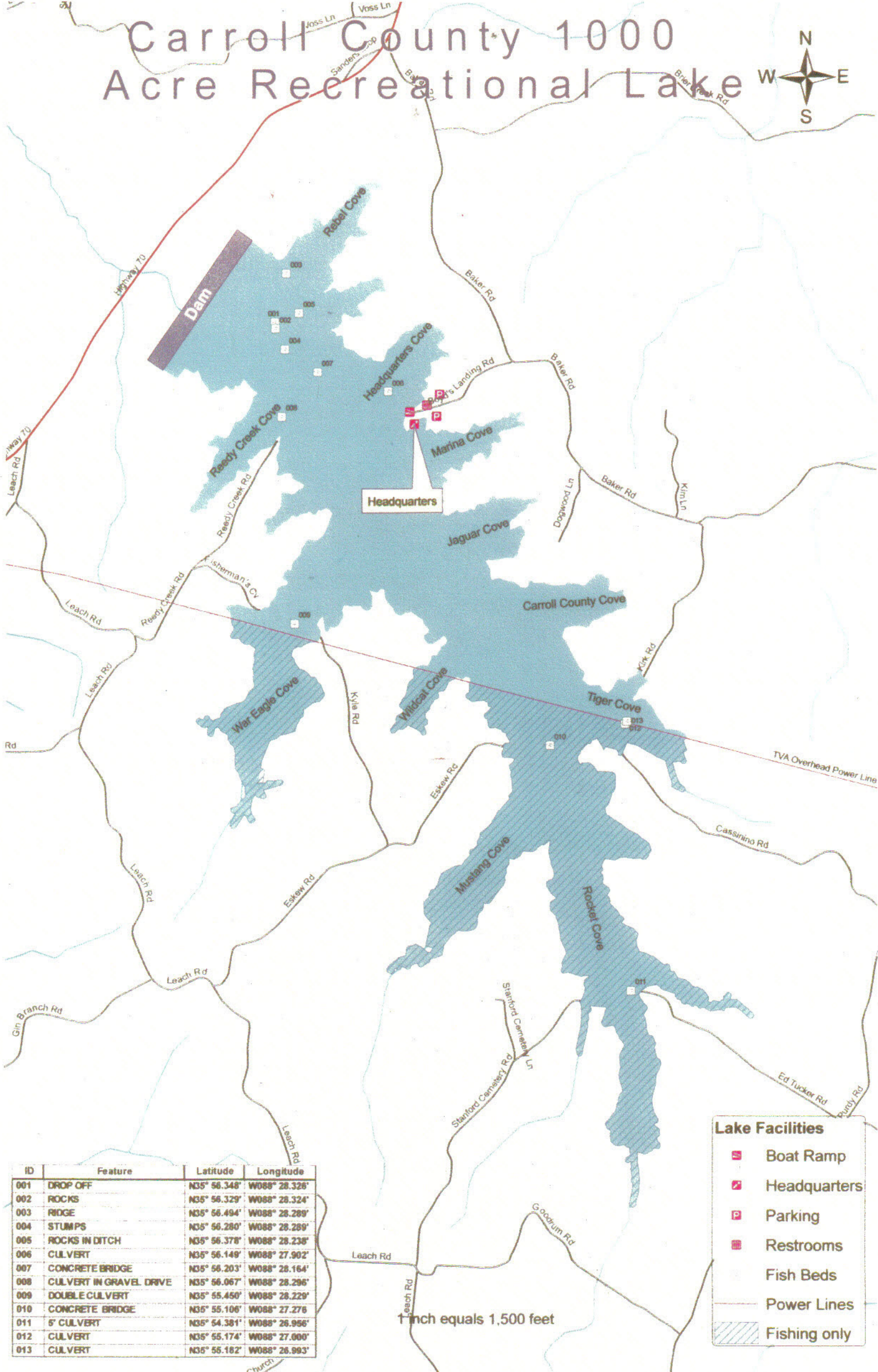


Carroll County 1000 Acre Recreational Lake



| ID | Feature | Latitude | Longitude |
|-----|-------------------------|--------------|---------------|
| 001 | DROP OFF | N35° 56.348' | W088° 28.326' |
| 002 | ROCKS | N35° 56.329' | W088° 28.324' |
| 003 | RIDGE | N35° 56.494' | W088° 28.289' |
| 004 | STUMPS | N35° 56.280' | W088° 28.289' |
| 005 | ROCKS IN DITCH | N35° 56.378' | W088° 28.238' |
| 006 | CULVERT | N35° 56.149' | W088° 27.902' |
| 007 | CONCRETE BRIDGE | N35° 56.203' | W088° 28.164' |
| 008 | CULVERT IN GRAVEL DRIVE | N35° 56.067' | W088° 28.296' |
| 009 | DOUBLE CULVERT | N35° 55.450' | W088° 28.229' |
| 010 | CONCRETE BRIDGE | N35° 55.106' | W088° 27.278' |
| 011 | 5' CULVERT | N35° 54.381' | W088° 28.956' |
| 012 | CULVERT | N35° 55.174' | W088° 27.000' |
| 013 | CULVERT | N35° 55.182' | W088° 28.893' |

1 inch equals 1,500 feet

Lake Facilities

- Boat Ramp
- Headquarters
- Parking
- Restrooms
- Fish Beds
- Power Lines
- Fishing only